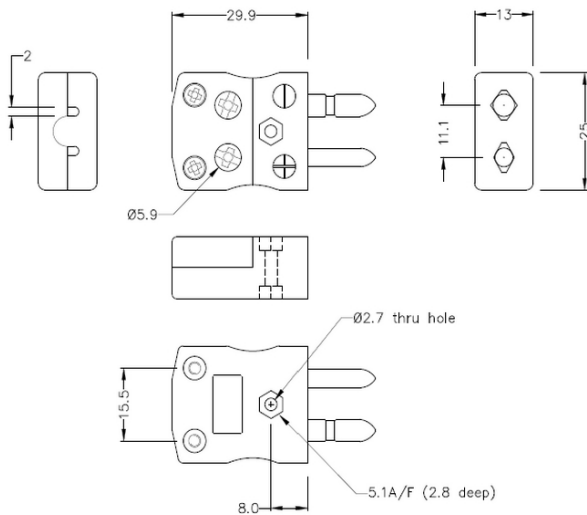


Conector estndar de termopar de cable rpido IS-J-MQ Tipo J IEC



Standard in-line Plug - Quick Wire
(dimensions in mm)

Labfacility are the UK's leading manufacturer of Temperature Sensors, Thermocouple Connectors and associated Temperature Instrumentation and stockings of Thermocouple Cables. The Company has been trading since 1971 and is ISO9001 accredited.

Conector estndar de termopar de cable rpido IS-J-MQ Tipo J IEC

Conexin sencilla de 'jab-in' para terminacin rpida, solo hay que empujar el cable y apretar el tornillo. Los contactos estn polarizados para evitar conexiones incorrectas

Especificaciones**Specifications**

Product Code	XE-1471-001
General Description	Easy 'jab-in' connection for rapid termination, contacts are polarised to prevent incorrect connection.
Thermocouple Type	J IEC
Connector Type	Quick Wire Plug
Connector Size	Standard
Colour	Black
Max. Temperature	220°C
Pins	Solid Round Pins
+Positive Contact	Iron
-Negative Contact	Copper Nickel
Standards Met	BS EN 50212:1997. RoHS
Series	Standard Connector